

PART OF THE NE 1/4 OF SEC. 21, T.5N., R.1W., S.L.B. & M. PLEASANT VALLEY ESTATES – PHASE 8

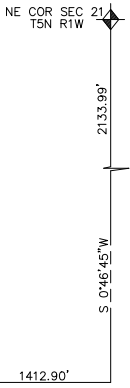
310

LOTS 79 – 86

IN SOUTH OGDEN CITY

SCALE 1" TO 50'

TAXING UNIT: 27

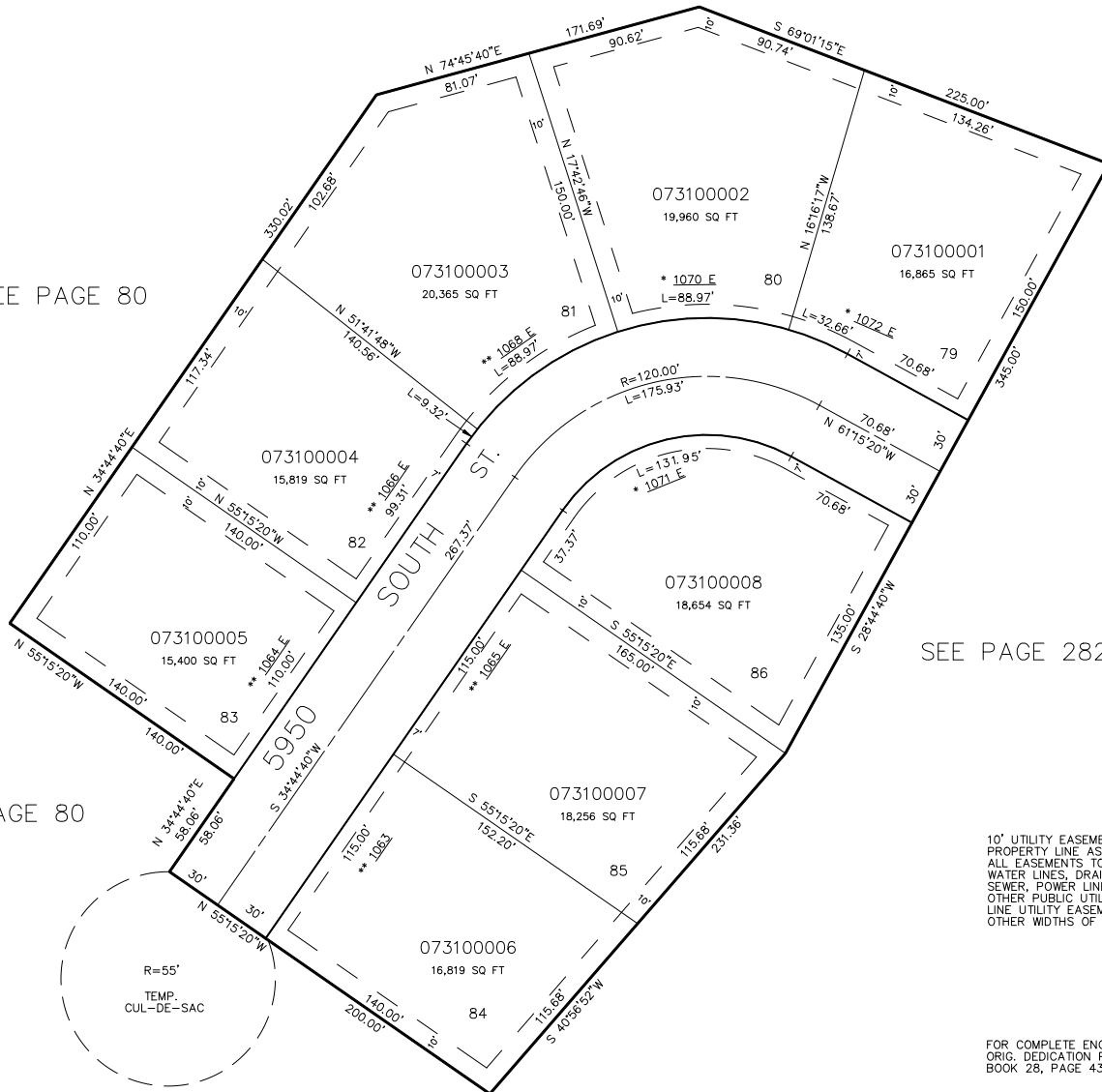


SEE PAGE 80

SEE PAGE 80

SEE PAGE 282

SEE PAGE 80



10' UTILITY EASEMENTS EACH SIDE OF PROPERTY LINE AS INDICATED BY DASHED LINES. ALL EASEMENTS TO BE USED FOR IRRIGATION, WATER LINES, DRAINAGE, SANITARY AND STORM SEWER, POWER LINES, TELEPHONE LINES AND OTHER PUBLIC UTILITIES. FRONT PROPERTY LINE UTILITY EASEMENTS ARE 7' WIDE. OTHER WIDTHS OF EASEMENTS ARE AS SHOWN.

FOR COMPLETE ENG DATA SEE ORIG. DEDICATION PLAT IN BOOK 28, PAGE 43 OF RECORDS.

* SEE CORRECTION AFFIDAVIT 1535-1726

** SEE CORRECTION AFFIDAVIT 1536-143

*CORRECTION AFFIDAVIT 1535-1726

*CORRECTION AFFIDAVIT 1536-143